

Drop-Forged Chain

General Information (*Indicates a required field)

Name

Street Address

Email

Company

City

State

Zip Code

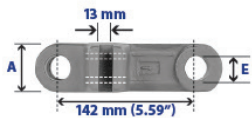
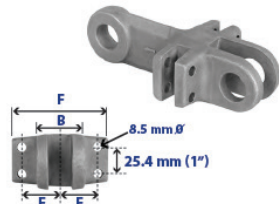
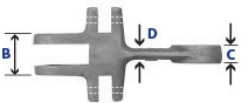
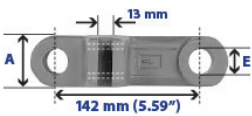
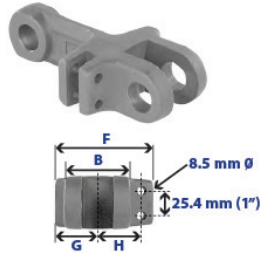
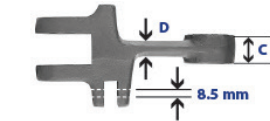
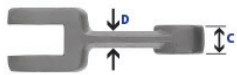
Phone

Chain Specifications

Please use the references provided below when completing this section.

Length

Chain Series



COMMON SERIES CHAIN

| Chain Series | Ultimate Strength | Working Load | Weight | A | B | C | D | E | Recommended Sprocket Type |
|--------------|-------------------|--------------|--------|--------|-------|-------|--------|--------|---------------------------|
| 102 HVY | 38,000 Lbs | 6,900 | 0.99 | 1.375" | 1.26" | 0.55" | 0.354" | 0.709" | Symmetrical Only |
| | 17,275 Kg | 3,135 | 0.45 | 35 mm | 32 | 14 | 9 | 18 | |
| 142 STD | 73,000 | 13,000 | 2.45 | 1.97" | 1.65" | 0.75" | 0.47" | 0.98" | Symmetrical |
| | 33,180 | 5,910 | 1.11 | 50 | 42 | 19 | 12 | 25 | |
| 142 HVY | 99,000 | 18,000 | 3.74 | 1.97" | 2.44" | 1.14" | 0.63" | 0.98" | Symmetrical |
| | 45,000 | 8,182 | 1.7 | 50 | 62 | 29 | 16 | 25 | |
| 175N STD | 135,000 | 24,540 | 5.9 | 2.36" | 2.48 | 1.18" | 0.87" | 1.18" | Non-Symmetrical |
| | 61,360 | 11,150 | 2.68 | 60 | 63 | 30 | 22 | 30 | |
| 260 STD | 150,000 | 27,270 | 14 | 2.95" | 2.76" | 1.18" | 0.79" | 1.26" | Non-Symmetrical |
| | 68,180 | 12,390 | 6.4 | 75 | 70 | 30 | 20 | 32 | |

DOUBLE SERIES CHAIN

| Chain Series | Ultimate Strength | Working Load | Weight | A | B | C | D | E | F | G | H | Recommended Sprocket Type |
|--------------|-------------------|--------------|--------|-------|-------|-------|-------|-------|-------|-------|-------|---------------------------|
| 142 STD/DBL | 73,000 Lbs | 13,000 | 3.41 | 1.97" | 1.65" | 0.75" | 0.47" | 0.98" | 3.11" | 1.30" | 1.41" | Non-Symmetrical |
| | 33,180 Kg | 5,910 | 1.55 | 50 mm | 42 | 19 | 12 | 25 | 79 | 33 | 35 | |
| 142 HVY/DBL | 99,000 | 18,000 | 4.72 | 1.97" | 2.44" | 1.14" | 0.63" | 0.98" | 3.90" | 1.69" | 1.71" | Non-Symmetrical |
| | 45,000 | 8,182 | 2.15 | 50 | 62 | 29 | 16 | 25 | 99 | 43 | 43.5 | |
| 175 STD/DBL | 135,000 | 24,540 | 7 | 2.36" | 2.48" | 1.18" | 0.87" | 1.18" | 3.78" | - | - | Non-Symmetrical |
| | 61,360 | 11,150 | 3.2 | 60 | 63 | 30 | 22 | 30 | 96 | - | - | |

TRIPLE SERIES CHAIN

| Chain Series | Ultimate Strength | Working Load | Weight | A | B | C | D | E | F | Recommended Sprocket Type |
|--------------|-------------------|--------------|--------|-------|-------|-------|-------|-------|-------|---------------------------|
| 142 STD/TPL | 73,000 Lbs | 13,000 | 4.07 | 1.97" | 1.65" | 0.75" | 0.47" | 1.41" | 3.62" | Non-Symmetrical |
| | 33,180 Kg | 5,910 | 1.85 | 50 mm | 42 | 19 | 12 | 35 | 92 | |
| 142 HVY/TPL | 99,000 | 18,000 | 5.4 | 1.97" | 2.44" | 1.14" | 0.63" | 1.71" | 4.42" | Non-Symmetrical |
| | 45,000 | 8,180 | 2.45 | 50 | 62 | 29 | 16 | 43.5 | 112.3 | |

Flight Type

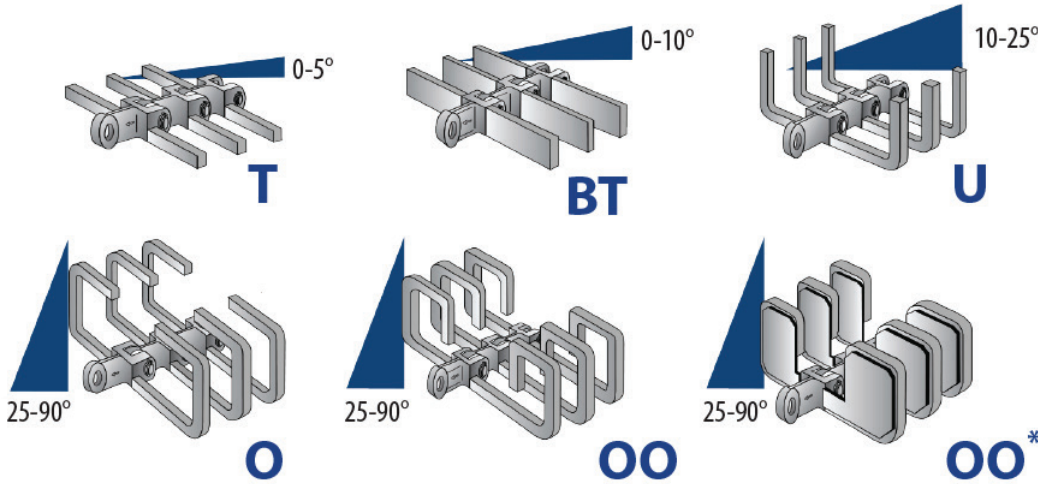
Please refer to the diagram below for reference.

Flight Type

Flight Dimensions

Flight Spacing

Note: If you would like to provide additional information, please do so in the box at the bottom of the page.



Chain Bolt Type

Please refer to the diagram to the right when completing this section.

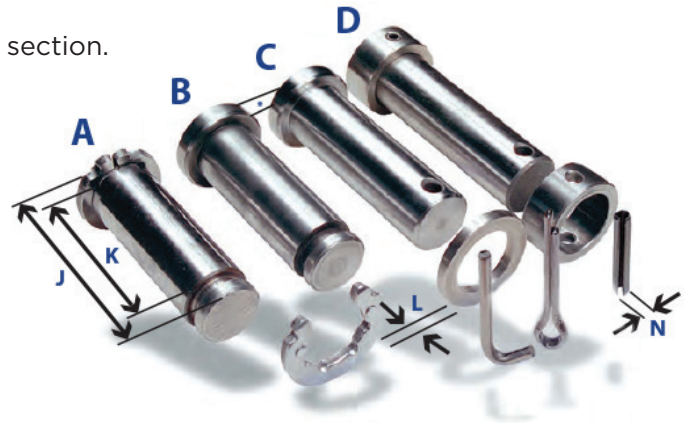
Chain Bolt Type

Bolted Paddle

Optional, if yes, please proceed to the next field.

Material

Additional Application Details



Bolt Types

- A:** The most widely used bolt; fastened using one clampwasher at each end.
- B:** Features an integral head (*8 mm) at one end and a clampwasher groove at the other.
- C:** Features an integral head (*8 mm) at one end and uses a **flat washer/cotter/S' pin or collar/spring pin** combination on the other.
- D:** (Ring Bolt) This is secured using one collar and spring pin at each end.

CHAIN BOLT TYPES